

**INSIDE**

Attracting Jobs, 1  
Regents Meeting, 2  
Foreign Studies, 3  
Homecoming, 4  
SSC Receives Skeleton, 5  
PTK Hosts Forum, 5  
Softball Home Opener, 6  
Baseball Home Opener, 7  
SSC Hosts Interscholastic Meet, 8

# COLLEGIAN

SEMINOLE, OKLAHOMA • VOL. 32 • NO. 7 • March 2004

## Officials Seek Funding To Attract Jobs To Seminole

Officials from the Oklahoma Department of Commerce, Rural Enterprises, Inc., Kiamichi Development Company, Seminole Economic Development Council and Seminole State College met with Legislative representatives in February to discuss possible ways to bring economic development money to Seminole.

Meeting at Seminole State College's Haney Center, the group toured the 4CNet call center company's operation in the College's temporary business incubator site. The center, recruited to Seminole in late fall, opened for business on Dec. 15, 2003 with 15 employees.

Representatives of the Kiamichi Development Company who helped place the company in Seminole, told the group that the center now has 30 employees, and hopes to increase that number to 50 in the near future. The current location will not allow growth beyond 50 employees, but, the company would like to expand its operations to approximately 200 employees in the near future. Long range plans are to employ as many as 300 people.

The 4CNet Call Center company has repeatedly stated that they are pleased with the quality of workers they have attracted at the Seminole location.

Discussions during the February meeting centered on identifying a permanent site for 4CNet and developing further space for an additional company to locate.

Rep. Dan Boren (D-Paden) met with the group stating his support for the project. Boren said he and Sen. Harry Coates (R-Seminole) have discussed efforts to identify funding options to help bring jobs to



### **BRINGING JOBS TO SEMINOLE**

**Officials representing state and local agencies met on the campus of Seminole State College Thursday afternoon to discuss possible funding sources to assist in attracting jobs to Seminole. Pictured left to right are: Dr. Jim Utterback, SSC President; Steve Saxon, SEDC Interim Director; Kenny Simpson, REI Executive Vice President; Charles Cayton, Kiamichi Development Company Chief Operating Officer; Bob Yandell, Little Dixie Community Action Agency Executive Director and State Representative Randall Erwin.**

Seminole.

At the request of Boren, Rep. Randall Erwin (D-Nashoba), who is on the Speaker's Leadership Team, and serves as the Chair of a House Appropriations Sub-Committee, and Linda Dunn, Site Location Manager for the Oklahoma Department of Commerce Office of Business Location also attended the meeting to help explore funding sources.

SEDC Interim Director Steve Saxon and Seminole State College President Dr. Jim Utterback pledged to work with Legislators

and other governmental agencies to try to identify funding for this project.

One possible site being explored for purchase and renovation is the former Wal-Mart building on Milt Phillips Avenue. Officials estimate approximately \$1.5 million would be needed to secure the facility, renovate and refurbish it, and install the necessary technology to support the current call center operation and provide space for

**See Jobs, Page 3**

# SSC Regents Convene for February Meeting

At their February meeting, the Seminole State College Board of Regents approved raises for the College's full-time employees and adopted a new policy concerning the new state law requiring student immunizations.

Under the hearing of delegations, English Instructor Christian Morgan gave a presentation about the College's new chapter of the American Association of University Professors. Morgan serves as president of the College's chapter.

Morgan informed the Board that the organization is not motivated by concerns over teacher pay and benefits.

"As President Utterback noted at the January Regents meeting, the AAUP on the Seminole State College campus is a group interested in academic freedom, shared governance and professional values," Morgan said.

During the President's Report to the Regents, SSC President Dr. Jim Utterback informed the Regents of the College's personnel, federal funding, economic development efforts and several up-coming events.

Utterback reported that SSC TRIO Advisor Pam Burnett has been appointed to the new position of Transfer Enrollment Manager for the College.

The position is part of the Title III Cooperative Grant awarded to SSC, Eastern State College, Murray State College and East Central University to facilitate student associate degree transfers to baccalaureate degree programs. Burnett earned her associate's degree from Seminole State College in 1995. She went on to earn bachelor's and master's

degrees from East Central University in 1997 and 2001, respectively.

Next, the president informed the Reports of recent federal funding announcements. In late January, the College was notified that it would receive \$300,000 for the Enoch Kelly Haney Center and \$50,000 for the SSC Fast-Tract Nursing Program.

Other awards connected to the College included a \$250,000 Rural Enterprises Grant for a Women's Business Center and a \$50,000 grant to Govergence, Inc., of Ponca City for curriculum development in regard to governmental contracting.

Next, Utterback reported on several events, including a "Start Your Own Business Workshop" on March 3, "First Americans, First Oklahomans: Indian Peoples" exhibit at Seminole State College on March 5-24, High Education Day at the Capitol on March 9, a Workers' Compensation Seminar on March 10, the Boren-Coates Invitational Golf Tournament on April 23, the annual SSC Recognition Banquet on May 4 and the College's Commencement Exercises on May 15.

Under the first item of Business, the Regents approved an across-the-board salary increase to full-time employees, retroactive to July 1, 2003.

Utterback noted that annual "step raises" are usually awarded in July. "For many months, we have been struggling to find adequate resources in our budget to award employees raises," Utterback said. "In light of budget constraints, we did not award this raise last July. Since our financial situation has improved, due to increases in enrollment

and reduced expenditures, I am proposing that the Board approve altering the FY04 budget to include payment of these raises at this time."

The step raises and accompanying benefits would cost the College approximately \$52,000.

Next, the Regents approved a policy concerning the new state law requiring student immunizations. In compliance with the law, the Board adopted a campus policy outlining vaccination requirements and establishing criteria for exceptions.

The law requires all first-time college enrollees residing on campus be vaccinated against meningococcal disease and that all full-time and part-time students enrolling in postsecondary institutions provide documentation of vaccinations against hepatitis B, as well as measles, mumps and rubella.

To comply with the policy, the students residing on campus can either receive the meningococcal vaccination or affirm that he/she chooses not to be vaccinated. Other full-time and part-time students must provide proof of vaccination or affirm that they decline to be immunized due to moral or religious beliefs.

SSC's policy mirrors policies created by other state institutions regarding the new state law.

The next Seminole State College Board of Regents Meeting is scheduled Thursday, March 25, 2004.

Members present at the February meeting included: Ben Walkingstick, David Wilson, William Harrison, Jr., Roger Nansel and Jon Flowers.

## Seminole State College COLLEGIAN

The Seminole State Collegian is published monthly during the fall and spring semesters by the Seminole State College Office of Media Relations, under the direction of Mona Ridley and with the assistance of a student staff.

The staff reserves the right to edit submitted material for spelling and style. Consideration is given to all submitted material, but submission does not ensure publication. No anonymous material will be considered. All views expressed are those of the author and not necessarily those of Seminole State College. The Collegian is distributed on the SSC campus and mailed to over 200 friends of the college.

Seminole State College, in compliance with Title VI of the Civil Rights Act of 1964, Executive Order 11246 as amended, Title IX of the Educational Amendments of 1972, and other Federal laws and regulations, does not discriminate on the basis of race, color, national origin, sex, age, religion, handicap, or status as a veteran in any of its policies, practices or procedures. This includes, but is not limited to, admissions, employment, financial aid and educational services.

This publication, printed by the SSC Print Shop, is issued by Seminole State College as authorized by the President of the College. At a cost of \$160.00, 1200 copies have been prepared and distributed.

# SSC's 2005 Foreign Studies Trip Planned

The Seminole State College Foreign Studies 2005 trip to England, Ireland and Wales is set for June 2005 and will last eleven days.

The cost for the trip will vary from \$2,266 to \$2535, depending on age and sleeping arrangements. Double room occupancy is less expensive than single room occupancy.

The cost of the trip includes all transportation, room-and-board, the tour, transfers, tips, two meals a day, tuition, fees and a limited health insurance policy. Participants will be responsible for occasional lunch, optional trips and souvenirs.

As with past trips, participants can take the College course for credit or audit the course.

The program is open to members of the general public and SSC students who are 18 years of age or older and are interested in a convenient, economical and educational way to travel. It is designed to give participants a hands-on understanding of cultures, art and history.

The 2005 trip will take a maximum of 34 people to London, Oxford, Stratford, North Wales and Dublin. Five people have already signed up for the 2005 trip and it is anticipated that the trip will be booked by the end of August.

"Touring other countries is one of the best forms of education you can experience you can't even compare seeing St. Paul's



**The 2003 Foreign Studies Class to Italy**

Cathedral in person to looking at a picture of it in a book. It's amazing," noted SSC Language Arts and Humanities Division Chair Kelly Kirk.

The 2005 trip will be the program's eighth trip since its inception in 1998. The program is based in SSC's art department and emphasizes travel as a means to experience "the art of living." Past trips visited Mexico, Italy, Greece, France, Scotland and England.

"The program has been a tremendous success," noted Kirk. "Each year, we have more and more students and members of the general

public traveling with the College. It is an excellent form of global education."

Kirk also noted that they are still three spots available for the 2004 trip to Italy. This year's Italy trip will depart in June and will last 12 days. Participants will tour "The Best of Italy," including the cities of Rome, Florence, Venice, Assisi, and Pompeii, as well as the island of Capri.

For additional information on the College's Foreign Studies Program, or to schedule a presentation for a club or organization, contact Kirk at (405) 382-9251.

## Jobs, From Page 1

future businesses to locate. Estimates range to as high as 500 jobs with multiple employers that could be located at this site.

"Growing companies and bringing jobs to this community is critical. On both national and state levels, emphasis is being placed on the role community colleges can play in rural economic development. It is imperative to the future of this community that we also do everything necessary on a local level to complement these state and national initiatives," Utterback said.

Boren said he feels confident there will

be support at the state level for helping Seminole during this difficult time.

Boren said, "Due to the huge jump in Seminole County's unemployment rate, we are in a situation that warrants special attention from the Governor, the Department of Commerce and the Legislature. We are working to bring the entities together that can make some very positive things happen here."

Statistics released by the Oklahoma Employment Security Commission for December, 2003, show Seminole County with the second highest unemployment rate among the 77 counties in the State. Figures show 13.3% of the workforce is unemployed. The

December, 2002 figure for unemployment was 7.3%.

Utterback added, "These unemployment figures show that we are in a crisis in Seminole County. We all must work together, take risks, and above all else take action now to build a positive future for this community."

Kenny Simpson, Executive Vice President of Rural Enterprises, Inc.(REI), also attended Thursday's meeting. Simpson helped identify potential federal partners for proposed economic development projects and pledged REI's continued support of the Seminole area.

# SSC Homecoming Queen Crowned

Seminole State College freshman Jaclyn Hudson of Tecumseh, Okla., was crowned the SSC 2004 Homecoming Queen during the half-time of the Trojan basketball game against Murray State College.

Five candidates were vying for the title, including Hudson, Jill Holmes of Chandler, Okla., Laura Keen of Lamar, Okla., Brooke Kinslow of Prague, Okla., and Angela Larney of Wewoka, Okla.

Kinslow and Larney tied for first runner-up.

Hudson is a freshman business major. She is the daughter of Jim Hudson and Susie and Lynn Wade. Her escort was Mark Adams, a sophomore secondary education major from Seminole, Okla. Adams is the son of Gary and Linda Adams.

Kinslow is the daughter of Gary and Debra Kinslow. She is a sophomore business

major. She is a member of the SSC Belles Basketball Team and the Sigma Kappa Delta English Honor Society. Her escort was Brett Case of Preston, Okla.

Larney is a sophomore Health and Physical Education major. The daughter of Walter and Rebecca Larney, she is active in the Native American Student Association and was the 2003 Miss Seminole Nation. Her escort was Bryant Beaver, a freshman Health and Physical Education major from Henryetta, Okla. Beaver is the son of Alicia Bucktrot.

Holmes is a freshman science and pre-med major. She is the daughter of Thom and Susan Holmes. She is active in the Phi Theta Kappa Honor Society, the Sigma Kappa Delta English Honor Society and is a vocalist in the College's Permanent Issue band. Her escort was Jeff Mize of Earlsboro, Okla.

Mize, the son of Jay and Debbie Mize, is a sophomore business major.

Keen is a freshman Health and Physical Education major. She is the daughter of Norma and Wiley Keen and is active in the Baptist Student Union. Her escort was Matt Norton, a freshman deaf education major from Tecumseh, Okla. Norton is the son of Joy and Gary Bickers.

The queen was presented her crown and plaque by Student Government Association President Ellinda McKinney-Jones of Shawnee, Okla.

Flower girl for the homecoming ceremony was six-year-old Kaitlyn Hodgins of Holdenville, Okla. She is the daughter of Ida and Shane Hodgins. The crown bearer for the ceremony was Christian Anderson, the five-year-old son of Roger and Leslie Anderson of Shawnee, Okla.



SSC Homecoming Queen Jaclyn Hudson of Tecumseh, Okla., (seated) is pictured with the SSC 2004 Homecoming court. They include (from left) Jeff Mize of Earlsboro, Okla.; Jill Holmes of Chandler, Okla.; Brett Case of Preston, Okla.; First Runner-Up Brooke Kinslow of Prague, Okla.; Mark Adams of Seminole, Okla.; First Runner-Up Angela Larney of Wewoka, Okla.; Bryant Beaver of Henryetta, Okla.; Laura Keen of Lamar, Okla.; and Matt Norton of Tecumseh, Okla. Six-year-old Kaitlyn Hodgins of Holdenville, Okla., was the flower girl, and five-year-old Christian Anderson of Shawnee, Okla., was the crown bearer.



Seminole State College freshman Jaclyn Hudson of Tecumseh, Okla., was crowned the SSC 2004 Homecoming Queen during the half-time of the Trojan basketball game against Murray State College. She is being crowned by her escort, Mark Adams, a sophomore from Seminole, Okla.

# SSC Receives Skeleton

The Seminole State College Human Anatomy class has some new bones to pick, thanks to Dr. Randall Kemp, Dr. Richard Tidwell and Nurse Practitioner Tricia Butner of the Seminole Medical Clinic.

The three medical professionals donated the new skeleton, "Skelly," to the College. The donation will enable students to better understand the intricacies of the structure of the human body.

"We at Seminole State College are very appreciative of Dr. Kemp and the Seminole Medical Clinic staff for the donation of the skeleton," noted SSC Anatomy Instructor Tony Yates. "This educational tool will certainly be put to good use in the classroom.

"It is always a delight when members of the community make the effort to contribute to a special need in order to ensure that our students receive the finest education possible. As our student enrollment continues to increase, donations such as this are vital to maintaining a quality education for our students," Yates said.

"Skelly" got his name from a competition held by SSC anatomy student. SSC student Sara Venable of Seminole came up with the winning name.



**The Seminole State College Human Anatomy class has some new bones to pick, thanks to Dr. Randall Kemp, Dr. Richard Tidwell and Nurse Practitioner Tricia Butner of the Seminole Medical Clinic. The three medical professionals donated the new skeleton, "Skelly," to the College. The donation will enable students to better understand the intricacies of the structure of the human body. (L-R) SSC Anatomy Instructor Tony Yates, Tidwell, Butner, Kemp, Skelly, SSC Anatomy student Kevin Schilling of Meeker and SSC Anatomy student Lisa Meshquenknoch of Shawnee.**

## SSC's PTK Hosts Cancer Awareness Forum



The Seminole State College student honor society, Phi Theta Kappa, hosted a special cancer awareness forum in late January.

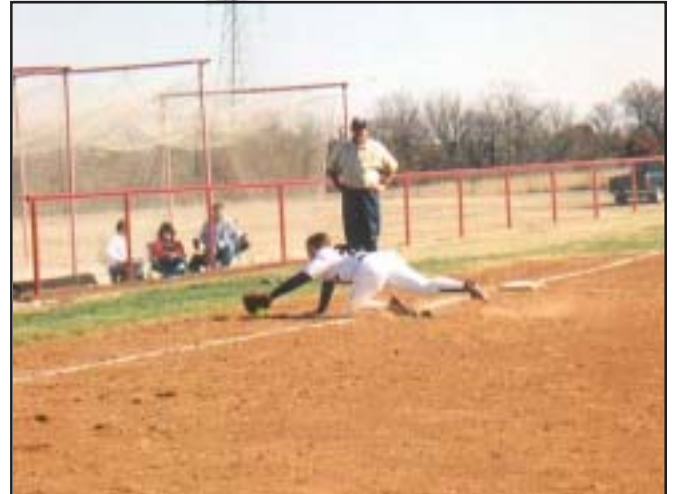
The forum featured special guest speaker and cancer survivor Toni Wittmann. Wittmann, who serves as the secretary to the College's Language Arts and Humanities and Business and Information Systems divisions, was diagnosed with breast cancer in 1999.

To overcome cancer, she endured a mastectomy, several extensive surgeries, chemotherapy and radiation. Today, she helps organize the American Cancer Society's Relay for Life and walks with other cancer survivors to help find a cure.

**Toni Wittmann, SSC Language Arts and Humanities and Business and Information Systems Secretary, was the special guest speaker at PTK's Cancer Awareness Forum in February.**

*Photo By Issac Pearce*

# Take Me Out to



Top Left: Sophomore first baseman Cathy Nitz of Bartlesville, Okla., snags an out against Rose State during the Lady Trojans home opener in February.

Top Right: SSC Lady Trojan third baseman Heather Jackson, a freshman from Asher, Okla., dives to catch a foul ball.

Left: Brittani Ellis, freshman shortstop from Tuttle, Okla., scores a hit against Rose State.

Photos by Issac Pearce.

## Check Out These Home Games for Lady Trojan Softball...

<b>Day</b>	<b>Date</b>	<b>Opponent</b>	<b>Time</b>
Tues.	Apr. 6	Carl Albert	2:00 & 4:00 pm
Tues.	Apr. 20	Northern	2:00 & 4:00 pm
Thurs.	Apr. 22	NEO	2:00 & 4:00 pm
Sat.	Apr. 24	Connors	2:00 & 4:00 pm
Tues.	Apr. 27	Eastern	2:00 & 4:00 pm
<b>May 7-9</b>	<b>Region II Tournament</b>	<b>McAlester</b>	<b>TBA</b>
<b>May 20-22</b>	<b>National Tournament</b>	<b>Clermont, FL</b>	<b>TBA</b>

# the Ball Game!



Sophomore Outfielder Cory Williamson of Seminole, Okla., scores a hit off Dodge City Community College.

A large crowd fills the stadium during the Trojans home opener against Dodge City Community College of Kansas in February.

See website for schedule changes: [www.sstrojans.com](http://www.sstrojans.com)

Day	Date	Opponent	Location	Time
Tues.	Mar. 23	Western	Seminole	1:00 p.m.
Sat.	Mar. 27	Grayson County, TX	Seminole	4:00 p.m.
Sun.	Mar. 28	Crowder, MO	Seminole	12:00 p.m.
Mon.	Mar. 29	Texarkana, TX	Seminole	1:00 p.m.
Tues.	Apr. 6	Rose State College	Seminole	1:00 p.m.
Sat.	Apr. 24	Univ. of Arkansas-Ft. Smith	Seminole	1:00 p.m.
Sat.	May 1	Connors	Seminole	1:00 p.m.
Tues.	May 4	Eastern	Seminole	1:00 p.m.
Sat.	May 8	NEO	Seminole	1:00 p.m.

**May 14-16**

**May 20-22**

**May 29 - June 5**

**Regionals** (Location & Time To Be Announced)

**South Central District Series** (Location & Time To Be Announced)

**NJCAA World Series in Grand Junction, CO**

# SSC Hosts Interscholastic Meet

More than 1,000 students from area high schools converged on the Seminole State College campus and the City of Seminole on Tuesday, March 2 for the College's 32<sup>nd</sup> annual interscholastic meet.

Students from Division I and II schools had the opportunity to compete for individual awards during morning and early-afternoon testing sessions. The top three finishers in each of the subject areas were awarded medals and fourth and fifth place winners received certificates. In addition, a sweepstakes trophy was awarded to the top school in each division based on accumulation of points and medals.

Students competed in Algebra I and II, American History, American Literature, Biology, Bookkeeping, Business, Chemistry, Civics, Computer Science, English Literature, General Physical Science, Geography, Geometry, Grammar, Health Wellness, Journalism, Keyboarding I, Keyboarding I and II, Oklahoma History, Physics, Psychology, Reading, Spanish I and II, World History, and Vocabulary.



More than 1,000 students from area high schools gathered at the Seminole State College campus in early March to compete in the College's 32<sup>nd</sup> Annual Interscholastic Meet.

Seminole State College and Workforce Oklahoma  
present a FREE

## Workers' Compensation Seminar

Wednesday, March 10, 2004

1 p.m. to 5 p.m.

Seminole State College  
Enoch Kelly Haney Center  
Lecture Hall

Seminole State College and Workforce Oklahoma are presenting an informational seminar designed to assist employers in understanding the various aspects of Workers' Compensation.